



Morristown Medical Center



Atlantic
Health System

Morristown Medical Center **EXPANSION**

Updated November 15, 2024



VISION FOR MORRISTOWN MEDICAL CENTER

Enhancing our World-Class Health Care Medical Center

- Advancing Morristown's status as a Center of Excellence for cardiology, oncology, orthopedics, neurology, critical care, trauma, women's health and pediatrics
- Delivering high-quality, innovative and personalized care in an equitable way to our entire community
- Responding to the most complex care needs for our region
- Attracting and retaining exceptional clinicians that advance clinical excellence for our community



VISION FOR MORRISTOWN MEDICAL CENTER

“Our Situation”

A Medical Center in Demand:

- Nationally recognized for clinical excellence
- U.S. News & World Report #1 Hospital in NJ 5 of last 7 years
 - #32 in US in 2024
- Newsweek -- #1 hospital in NJ
- Recruitment of internationally known physicians
 - Dr. Philippe Genereux – Structural Heart
 - Dr. Tom Thomas – Head & Neck
 - Dr. Matt Martinez – Sports Cardiology
- Training Programs – retain physicians, nurses, etc.



VISION FOR MORRISTOWN MEDICAL CENTER

Why We Need to Expand

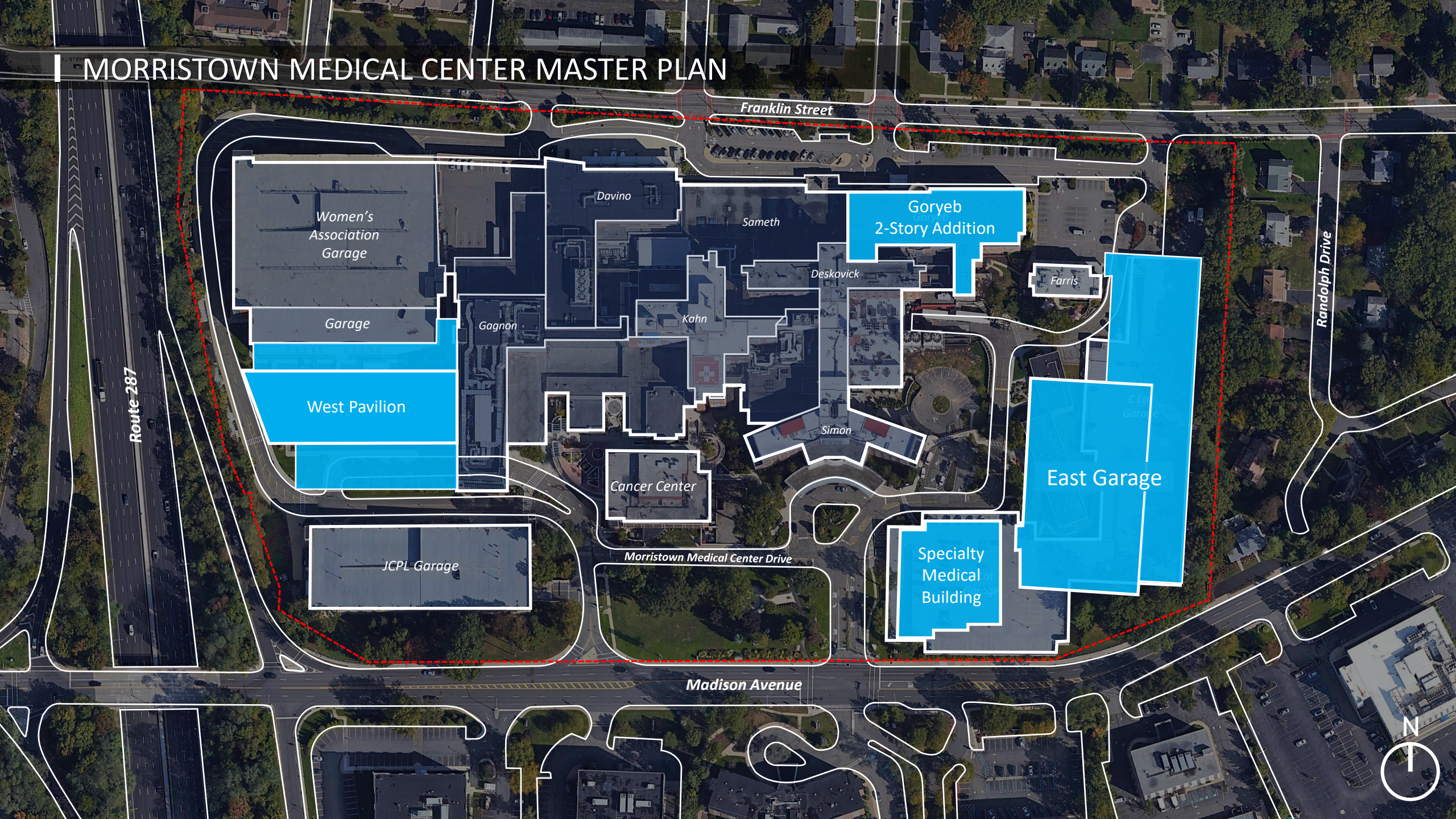
- Increased Demand – patients pass other hospitals for care at Morristown – 6.5%-7% growth
- ED one of the largest in the State, treats 100,000+ patients per year
 - Includes: Pediatrics, Geriatric, Trauma, Behavioral Health
- Space constraints
 - Acute care capacity
 - Births: 6,000+ projected for 2025

Maximizing our Existing Space

- All non-clinical and less urgent cases already moved off-campus
- Emergency Department expansion nearly complete
- Use of existing inpatient space optimized throughput
- Patient Flow initiatives



MORRISTOWN MEDICAL CENTER MASTER PLAN



Franklin Street

Women's
Association
Garage

Garage

West Pavilion

JCPL Garage

Davino

Sameth

Goryeb
2-Story Addition

Deskovick

Farris

Gagnon

Kahn

Simon

Cancer Center

East Garage

Morristown Medical Center Drive

Specialty
Medical
Building

Madison Avenue

Route 287

Randolph Drive



WEST PAVILION

180 New ICU-capable Inpatient Beds

- Accommodating growing complex care
- Prepared for future pandemics and mass casualty events

20 State-of-the-Art Operating Rooms

- Capability to support ever-advancing technical procedures for decades to come

Imaging Suite for Patient Convenience

- Imaging that meets expanded use and technological advancements

Emergency Back-Up Power

- Systems supporting campus-wide resiliency

Modernized, Relocated Helipad

- Overlooking 287, the new structure ensures timely, lifesaving responses to our region's most significant trauma events



| SPECIALTY MEDICAL BUILDING

- **New Home for State-of-the-Art Diagnosis and Treatment**
Ease of access to complex care (GI, cardiac, etc.) for our community without stepping foot in the hospital – but adjacent
- **Convenient, Coordinated Care**
Centralized location for patients needing in-office or hospital-based care
- **Access to Specialty Physician Practices**
- **Preserves hospital space for most serious cases**



| EAST GARAGE

- **Replacement Parking Structure for Aging Garage**
Improves patient and visitor experience and alleviates neighborhood parking by our team
- **Supports increased demand for care**
Built with ample space to meet growing need
- **Community-Sensitive Design**
An attractive façade and sustainable materials to reduce noise and blend into the beauty of the surrounding vicinity

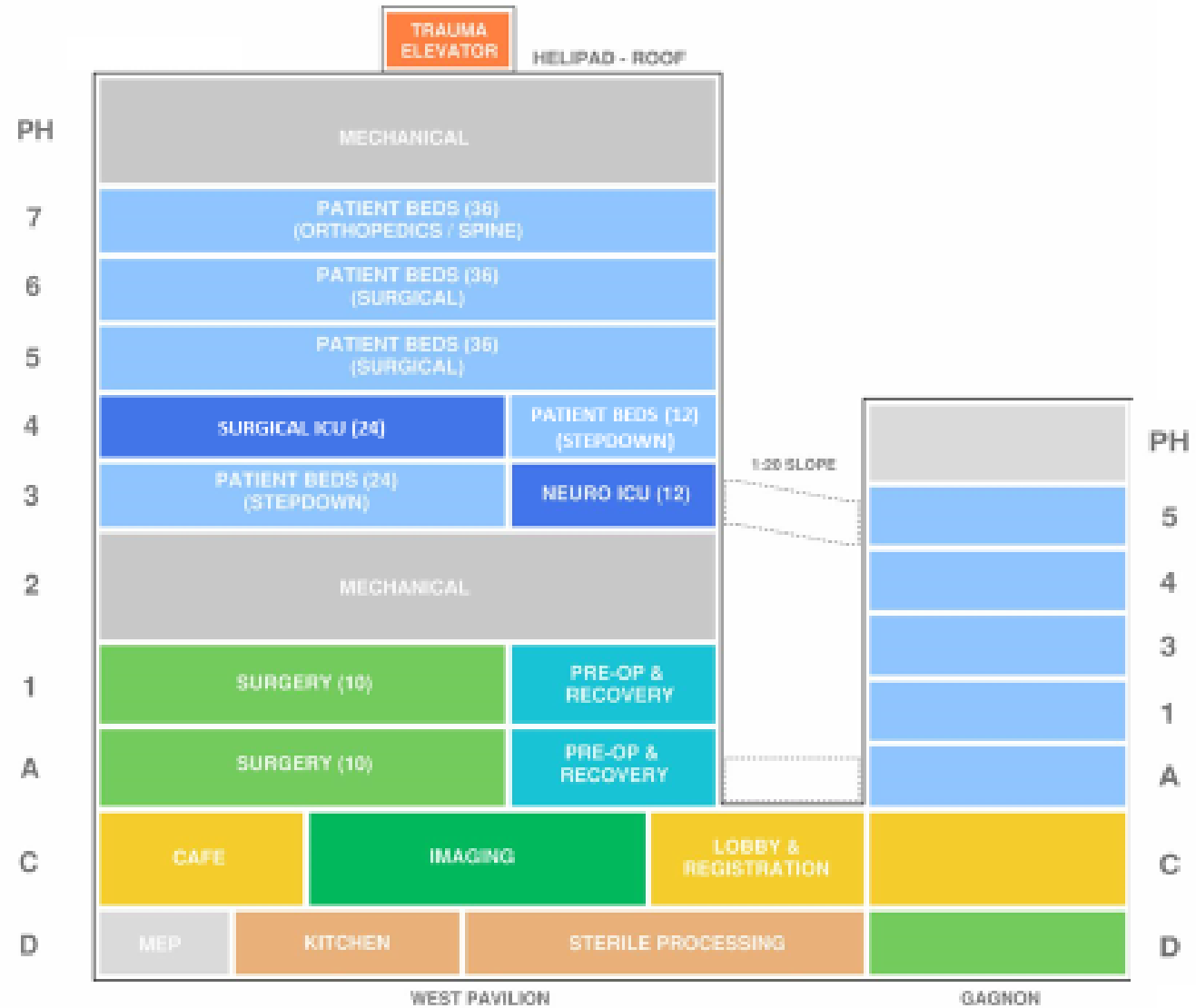
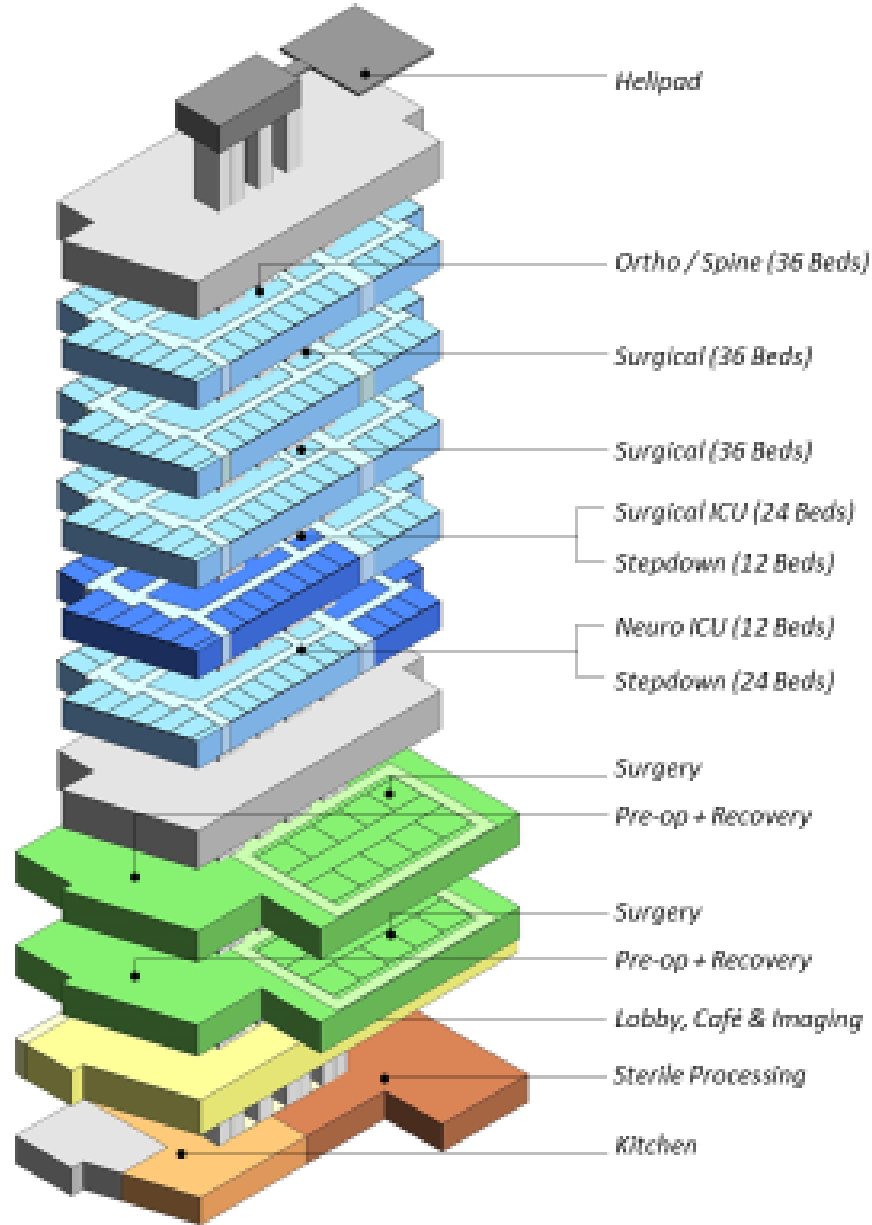


I GORYEB 2-FLOOR EXPANSION

- **Nation Leading Care for our Region's Children**
25 new inpatient beds to accommodate growth of pediatric services, including oncology and surgery
- **All Private Inpatient Rooms**
Modern design that ensures Morristown Medical Center fully satisfies Department of Health standards
- **Designed for Family-Centered Care**
- **Meeting Current and Future Demand**
Pediatric services have already grown nearly 10% year-over-year



BUILDING STACK



LEVEL C: MAIN ARRIVAL LEVEL

FLOOR-TO-FLOOR HEIGHT: 20'-3"

- Multi lane drop-off and valet ensures clear, efficient vehicular arrival
- New cafeteria offers families and team convenient access to on-campus meals
- Expanded imaging services conveniently support oncology patients in Cancer Center
- Matches Gagnon's floor height to ensure alignment
- Provides required clearance (15' minimum) for vehicular drop-off
- Height accommodates mechanical and structural elements and equipment for imaging suite



LEVELS A & 1: SURGERY

FLOOR-TO-FLOOR HEIGHT: 17'

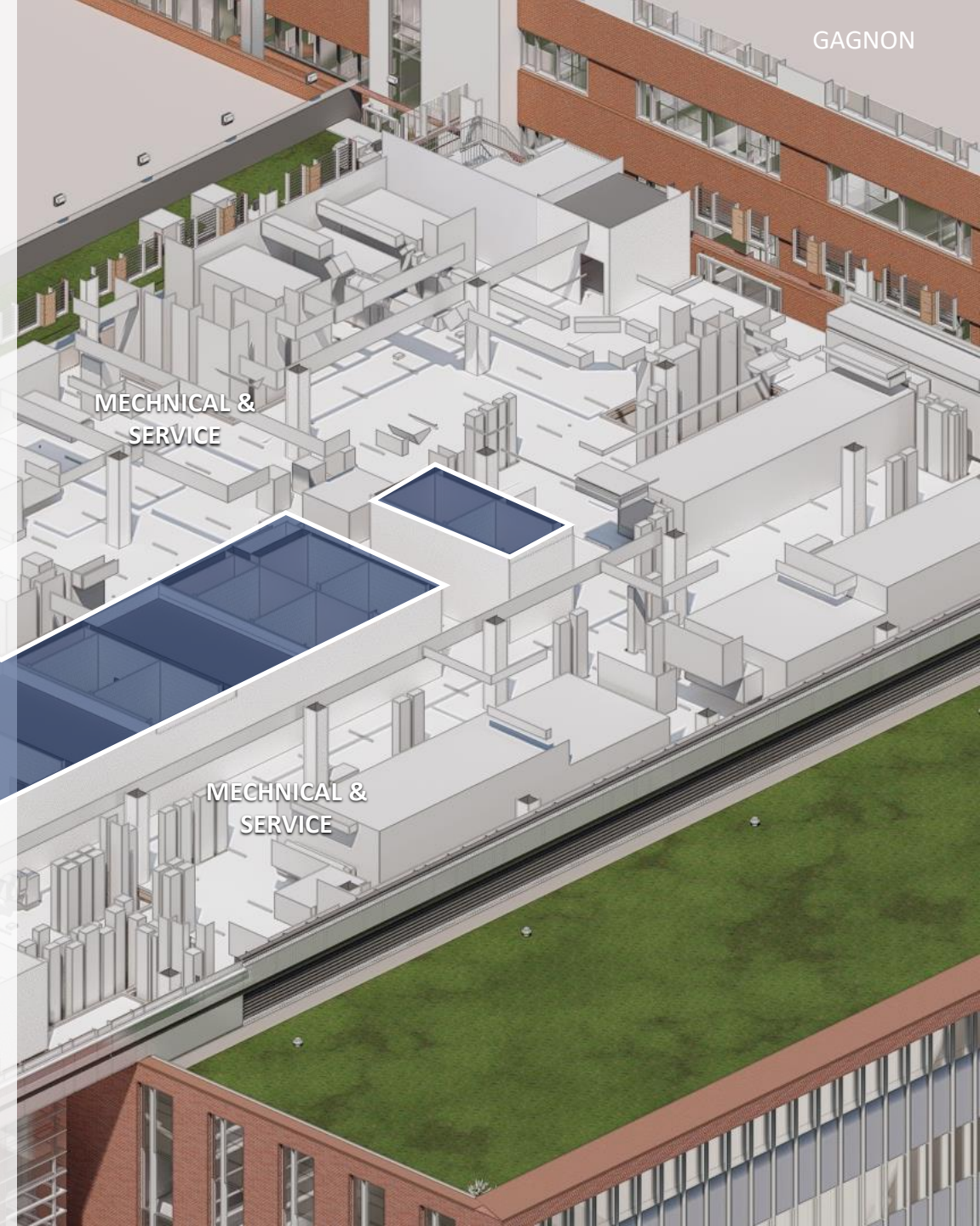
- Accommodates surgical growth (4.6% annually – expanding from 29 to 40 Operating Rooms)
- Enhanced family waiting areas
- Flexible, state-of-the-art ORs ensure clinical excellence and the latest technological/robotic advancements over the coming decades
- Diverse subspecialties for aging populations and increasing orthopedic and neurological disorders
- HVAC requirements for operating/prep/recovery spaces require ample space above ceilings
- Height accommodates surgical suites and critical boom-mounted equipment



LEVEL 2: MECHANICAL

FLOOR-TO-FLOOR HEIGHT: 23'

- Air-handling and exhaust for base of building provided at this level
- Significant height required to fit air-handlers, associated clearance required for access and maintenance
- Stacked arrangement of supply and return plenums (controlling air flow) capitalize on all available perimeter area for outdoor air
- All chilling and exhaust systems include energy recovery for increased efficiency



LEVELS 3 THRU 7: INPATIENT BEDS

FLOOR-TO-FLOOR HEIGHT: 14'

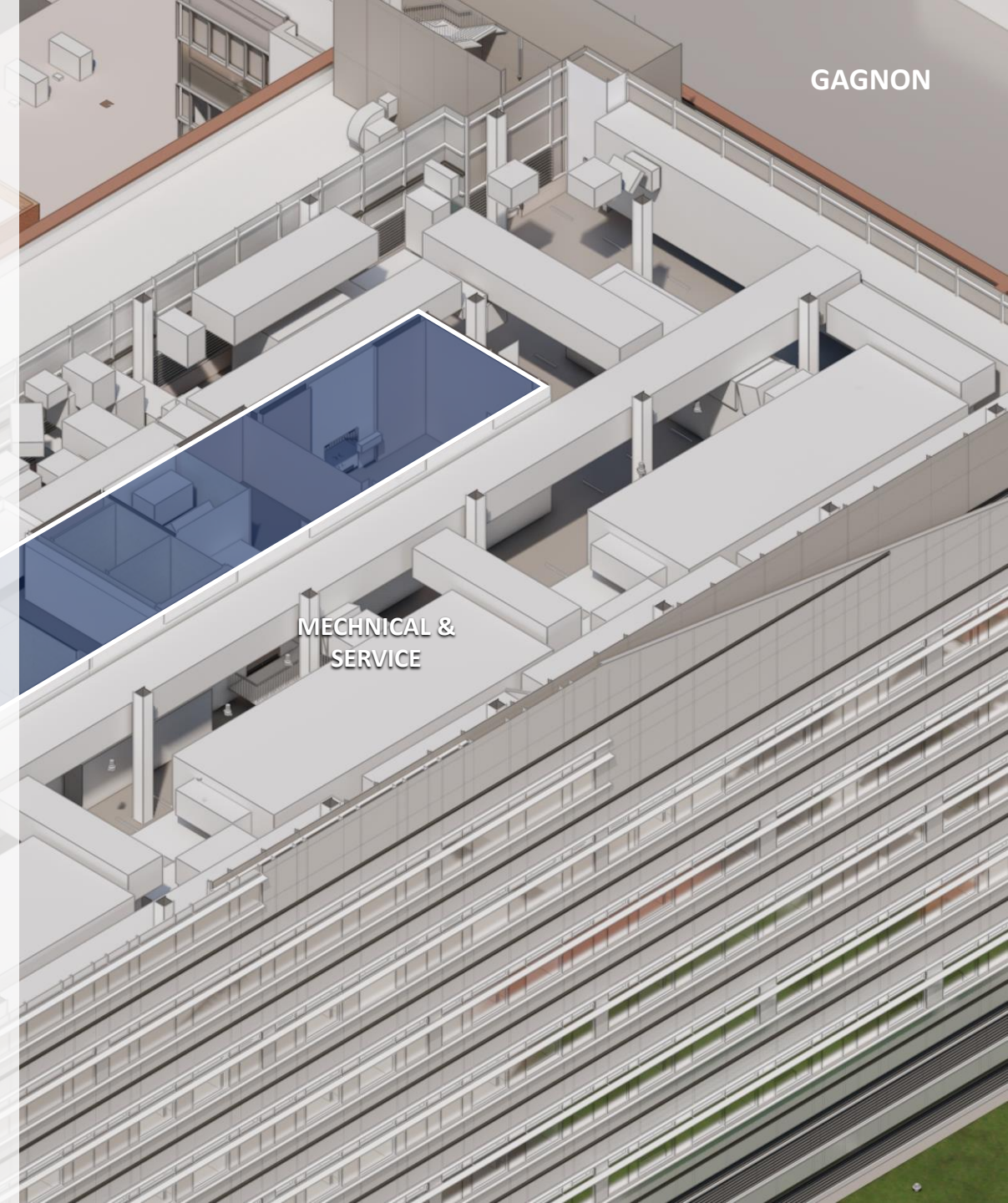
- 100% ICU-capable rooms accommodate complex and extended care, potential pandemics, mass casualties
- All private rooms meet code requirements and enhance infection prevention, privacy, security, and family and cultural accommodations
- HVAC accommodates large amounts of outdoor air, requiring significant space above ceilings
- Space for mechanical, plumbing, sprinkler, medical gas and lighting systems tightly arranged to achieve 8' minimum ceiling height
- In-room patient lifts and medical gas service columns determine floor to floor heights
- Equipment and supply space to meet demand



ROOFTOP MECHANICAL PENTHOUSE

FLOOR-TO-FLOOR HEIGHT: 22'-6"

- All air-handling and exhaust for tower of building provided at this level
- Significant height required to fit air-handlers, associated clearance required for access and maintenance
- Stacked arrangement of supply and return plenums capitalize on all available perimeter area for outdoor air
- All chilling and exhaust systems include energy recovery for increased efficiency



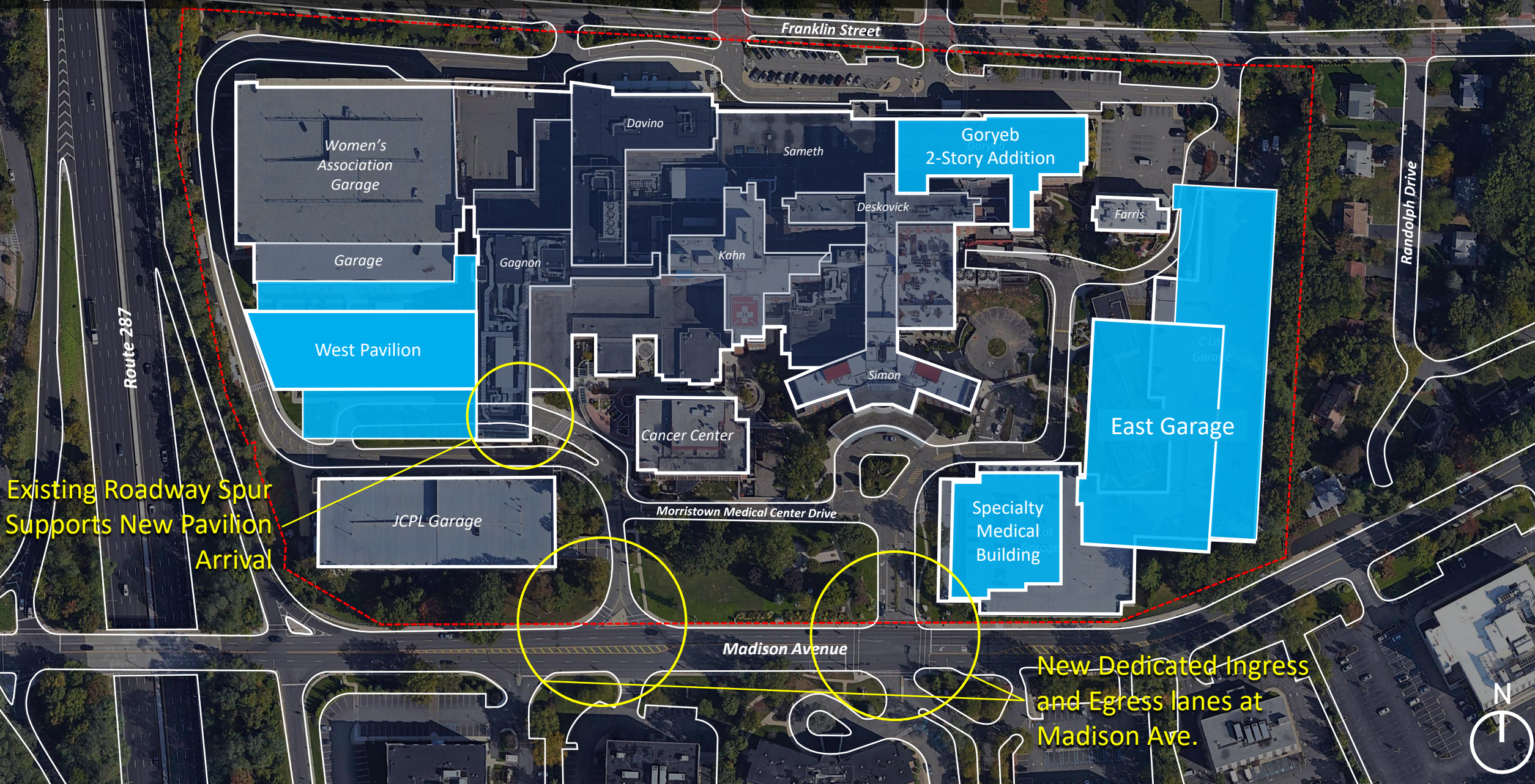
ARRIVAL



SAFE, EFFICIENT TRAFFIC FLOW AND PARKING FOR PAVILION

- 3-lane dedicated drop-off area minimizes excessive queuing
- Single arrival point for Gagnon and Pavilion establishes a clear entry point for patients, visitors and the public
- Direct access to West/JCP&L & Women's Association Garages ensure a smooth, efficient arrival for patients, visitors and team members

MORRISTOWN MEDICAL CENTER MASTER PLAN



Franklin Street

Route 287

Randolph Drive

Women's Association Garage

Garage

West Pavilion

JCPL Garage

Davino

Sameth

Goryeb 2-Story Addition

Deskovick

Farris

Kahn

Gagnon

Simon

Cancer Center

East Garage

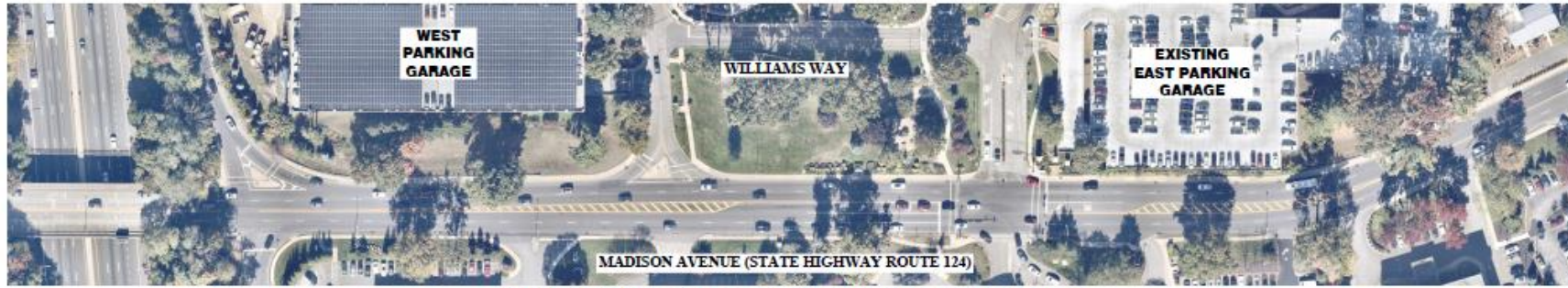
Specialty Medical Building

Morristown Medical Center Drive

Madison Avenue

New Dedicated Ingress and Egress lanes at Madison Ave.





EXISTING MADISON AVENUE TRAFFIC PATTERN



PROPOSED MADISON AVENUE TRAFFIC PATTERN WITH ONE-LANE TURN



PROPOSED MADISON AVENUE TRAFFIC PATTERN WITH TWO-LANE TURN

I BENEFITS TO THE TOWN OF MORRISTOWN

- EXPANDED ACCESS TO THE HIGHEST QUALITY HEALTH CARE
- IMPROVED PATIENT ACCESS AND THROUGHPUT
- CONVENIENT, COORDINATED CARE
- CIVIC IMPROVEMENTS DESIGNED IN PARTNERSHIP WITH LOCAL LEADERSHIP
- PREPARED FOR OUR COMMUNITY'S FUTURE HEALTH CARE NEEDS
- SUSTAINABLE DESIGN AND CONSTRUCTION



ECONOMIC SUPPORT FOR TOWN OF MORRISTOWN

- JOBS
 - 500 PERMANENT JOBS
 - MORE THAN 1,500 UNION CONSTRUCTION JOBS
- MORRISTOWN MEDICAL CENTER CURRENTLY
 - 7,000 TEAM MEMBERS
 - 2,000 PHYSICIANS
- 1,000 AHS TEAM MEMBERS LIVE AND WORK IN TOWN OF MORRISTOWN
- ONE OF MORRISTOWN'S LARGEST TAXPAYERS



| SIMILAR DEVELOPMENTS IN NJ



Atlantic Health System
West Pavilion at Morristown
Medical Center
Morristown, NJ

- **11 stories, approx. 189' tall**
- 483,530 square-feet
- 108 private rooms
- 36 Intensive Care Unit (ICU) beds
- 36 "Step-Down" rooms
- 20 operating rooms
- New café, kitchen
- Imaging suite

| SIMILAR DEVELOPMENTS IN NJ

Hackensack Meridian
HELENA THEURER PAVILION
Hackensack, NJ

- **9 stories, approx. 198' tall**
- 530,000 square-feet
- 175 medical/surgical beds including a Musculoskeletal Institute and step-down intermediate care rooms
- 50 Intensive Care Unit (ICU) beds
- 24 operating rooms



■ SIMILAR DEVELOPMENTS IN NJ



RWJBarnabas
RUTGERS CANCER INSTITUTE OF
NEW JERSEY
New Brunswick, NJ

- **12 stories and 193' tall**
- 520,000 square-feet
- 96 inpatient beds
- 9 Operating Rooms
- Outpatient care spaces include 84 infusion bays, 74 exam rooms, advanced radiology, diagnostic equipment, pharmacy facilities and urgent care

■ SIMILAR DEVELOPMENTS IN NJ



Cooper Health CAMDEN CAMPUS EXPANSION Camden, NJ

- \$3 Billion proposal
- **Three new clinical towers**
- 100 new inpatient beds





SIMILAR DEVELOPMENTS IN NJ

RWJ Barnabas
NEW MEDICAL PAVILION
New Brunswick, NJ

- **15 stories**
- **226,000 square-feet**
- Additional Medical and administrative office spaces to support the existing RWJ Barnabas Health hospital operations

Proposed DRAFT Timeline

2025	2026	2027	2028	2029	2030
East Garage Project					
		Specialty Medical Building			
	West Pavilion				
				Goryeb Expansion	

*Thank you for helping us build healthier communities -
And for addressing the needs to continue to respond to growing
community demand for exceptional health care*



Atlantic Health System

Morristown Medical Center

*Visit our website to learn more and see the latest updates:
www.atlantichealth.org/expansion*